

1.13 Screw-in heating element G 1½

Model C/RR/3/G 1½ without thermostat
Model with thermostat, internally or externally regulated on request

APPLICATION

- heating up thin oils, aqueous solutions and fluids that do not attack stainless steel mat.-no. 1.4541 (AISI 321)
- for heating up air over 120 °C, please contact us!

DESIGN

- 3 tubular heating elements made of stainless-steel mat.-no. 1.4541 (AISI 321)
- 35 mm unheated
- brass-nipple G 1½
- bright-galvanized steel-cap, protection type IP 30, cable entry adjustable by 360°
- model with thermostat, internally regulated, see design on catalogue page 1.10
- model with thermostat, externally regulated, see design on catalogue page 1.11



ELECTRICAL CONNECTION

- up to 3 000 Watt at 230 V single-phase current or 3 x 400 V three-phase current
- from 4 000 Watt at 400 V (2~) two-phase current (up to 6 000 W)
- from 4 000 Watt at 3 x 400 V three-phase current

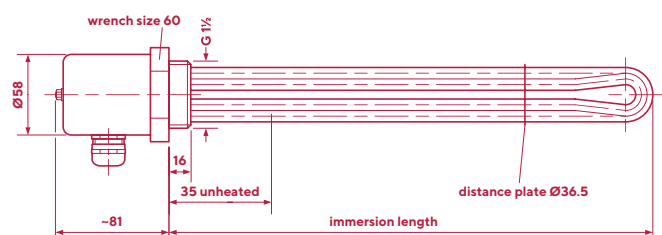
TECHNICAL DATA

IMMERSION LENGTH (APPROX. MM)	POWER (APPROX. WATT)	SURFACE LOAD (WATT/CM ²)	ARTICLE NO.
455	1 350	2.0	01130011
680	2 000	2.0	01130021
880	2 700	2.0	01130031
1 100	3 500	2.0	01130041

IMMERSION LENGTH (APPROX. MM)	POWER (APPROX. WATT)	SURFACE LOAD (WATT/CM ²)	ARTICLE NO.
455	4 000	6.0	01130111
680	6 000	6.0	01130121
880	8 000	6.0	01130131
1 100	10 500	6.0	01130141

ALTERNATIVE DESIGN

- other lengths and unheated areas
- other voltage and power
- thread G 2
- bright-galvanized steel-cap, protection type IP 65
- stainless-steel-cap, protection type IP 65



1.14 Screw-in heating element G 1½

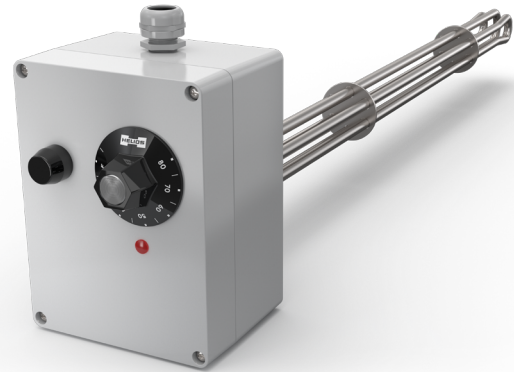
Model C/Th/a/TRO/RR/3/G 1½ with thermostat and dry-run protection
Model with thermostat and limiter on request

APPLICATION

- heating up chlorine-free water, weak acids and caustic solutions that do not attack stainless-steel mat.-no. 1.4571 (AISI 316Ti)

DESIGN

- 3 tubular heating elements made of stainless-steel mat.-no. 1.4571 (AISI 316Ti)
- nipple G 1½, stainless-steel mat.-no. 1.4571 (AISI 316Ti)
- polycarbonate case, light grey, protection type IP 65
- thermostat 30 to 110 °C, switching difference 5 K
- dry-run protection, operating temperature 165 °C (-30 K), 3 x 40 A, up to 400 V
- alternative: temperature limiter 115 °C, 16 A, up to 400 V, three pole



ELECTRICAL CONNECTION

- up to 3 000 Watt at 230 V single-phase current or 230/400 V three-phase current
- from 3 500 Watt at 400 V (2~) two-phase current (up to 6 000 W)
- from 4 000 Watt at 3 x 400 V three-phase current

TECHNICAL DATA

IMMERSION LENGTH (APPROX. MM)	POWER (APPROX. WATT)	SURFACE LOAD (WATT/CM ²)	ARTICLE NO.
455	1 350	2.0	01141011
680	2 000	2.0	01141021
880	2 700	2.0	01141031
1 100	3 500	2.0	01141041

IMMERSION LENGTH (APPROX. MM)	POWER (APPROX. WATT)	SURFACE LOAD (WATT/CM ²)	ARTICLE NO.
455	4 000	6.0	01141111
680	6 000	6.0	01141121
880	8 000	6.0	01141131
1 100	10 500	6.0	01141141

ALTERNATIVE DESIGN

- other lengths and unheated areas
- other powers and voltages
- other materials, tubular heating elements mat.-no. 2.4858 (ALLOY 825)

