

# 1.6 Screw-in heating element G 1½

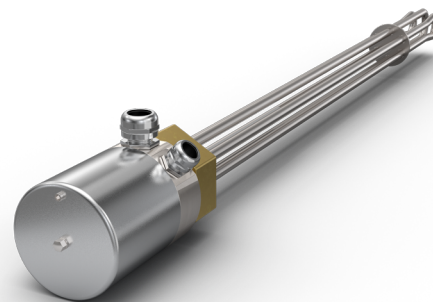
## Model C/Th/i/INC/3/G 1½ with thermostat, internally regulated

### APPLICATION

- direct heating of domestic hot water
- a) steel enamelled pressure-type storages with active anode
- b) other storage heaters, stainless-steel storages without resistant

### DESIGN

- 3 tubular heating elements made of special material mat.-no. 2.4858 (ALLOY 825)
- isolate built-in tubular heating elements, 80 mm unheated
- brass-nipple G 1½, steel-cap, protection type IP 65, cable entry adjustable by 360°
- with 2<sup>nd</sup> cable entry for control cable at three-phase current
- thermostat 0 to 120 °C, switching difference 3 K
- threaded socket length up to 35 mm, resistance 560 ohms
- threaded socket length longer than 35 mm, resistance 10 ohms, please contact us!



### ELECTRICAL CONNECTION

- 2 000 Watt at 230 V single-phase current, single-pole thermostat switches directly
- 3 000 Watt at 230 V single-phase current, single-pole thermostat switches directly
- from 3 000 Watt at 3 x 400 V three-phase current, contactor necessary

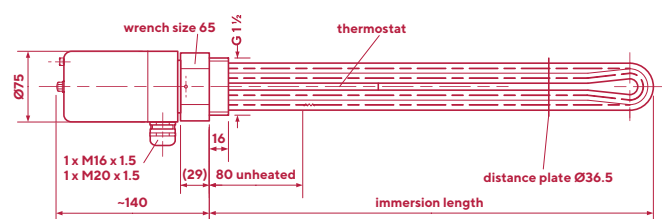
### TECHNICAL DATA

IMMERSION LENGTH (APPROX. MM)	POWER (APPROX. WATT)	SURFACE LOAD (WATT/CM <sup>2</sup> )	ARTICLE NO.
480	2 000*	4.9	01061011
450	3 000	5.2	01061021
600	4 500	5.5	01061031
600	6 000	7.4	01061041
700	6 000	6.2	01061051
700	7 500	7.7	01061061
800	9 000	8.0	01061071

\*only available for 230 V single-phase current.

### ALTERNATIVE DESIGN

- other lengths and unheated areas
- other voltage and power
- thread G 2
- brass-screw-cap, protection type IP 65, height 140 mm, cable entry axial
- model without thermostat on request



# 1.7 Screw-in heating element G 1½

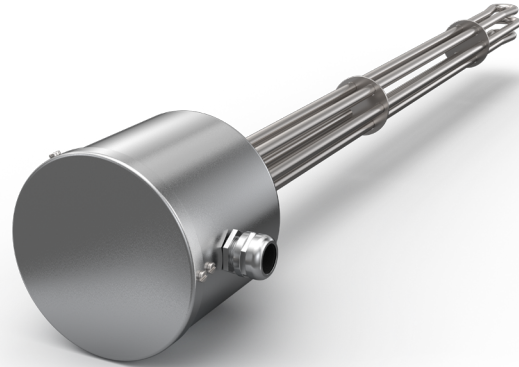
## Model C/Th/STB/i/INC/3/G 1½ with double-thermostat, internally regulated

### APPLICATION

- direct heating of domestic hot water
- a) steel enamelled pressure-type storages with active anode
- b) other storage heaters, stainless-steel storages without resistant

### DESIGN

- 3 tubular heating elements made of special material mat.-no. 2.4858 (ALLOY 825)
- isolate built-in tubular heating elements, 80 mm unheated
- brass-nipple G 1½, steel-cap, protection type IP 30
- double-thermostat, switching difference, switching capacity 20 A, 400 V, three-pole
- thermostat (5) to 85 °C, switching difference 12 K
- temperature-limiter 110 °C
- threaded socket length up to 35 mm, resistance 560 ohms
- threaded socket length longer than 35 mm, resistance 10 ohms, please contact us!



### ELECTRICAL CONNECTION

- 2 000 Watt at 230 V single-phase current, single-pole thermostat switches directly
- 3 000 Watt at 230 V single-phase current, single-pole thermostat switches directly
- from 3 000 Watt at 230/400 V three-phase current, contactor necessary

### TECHNICAL DATA

IMMERSION LENGTH (APPROX. MM)	POWER (APPROX. WATT)	SURFACE LOAD (WATT/CM <sup>2</sup> )	ARTICLE NO.
480	2 000*	4.9	01070011
450	3 000	5.2	01070021
600	4 500	5.5	01070031
600	6 000	7.4	01070041
700	6 000	6.2	01070051
700	7 500	7.7	01070061
800	9 000	8.0	01070071

\*only available for 230 V single-phase current.

### ALTERNATIVE DESIGN

- other lengths and unheated areas
- other voltage and power

