

# 5.1 Bath immersion heater

## Model bath immersion heater without thermostat

### APPLICATION

- direct heating of water, caustic solutions, acids, mordant and other fluids that allow a specific surface load of 2.5 W/cm<sup>2</sup>

### DESIGN

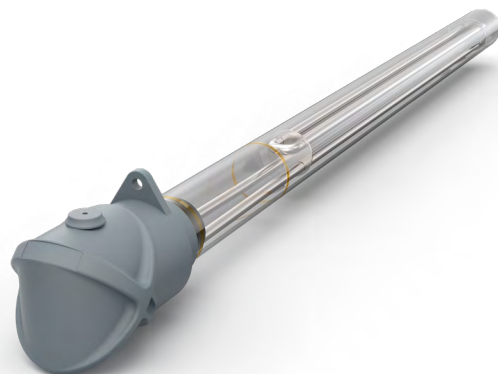
- exchangeable heating element made of stainless-steel
- exchangeable protective tube, different materials are available
- cap made of acid and temperature-resistant plastic, protective type IP 65
- by turning the upper part of the cap by 180°, an axial and radial arrangement of the supply line can be achieved
- with 2 m long plastic-coated power cable (up to 100 °C), without plug

### INSTALLATION

- HELIOS bath immersion heaters must be installed vertically in the fluid to be heated
- there are markings for the minimum and maximum liquid level on the protective tube
- the liquid level may fluctuate between the marks, but not fall below or exceed them
- HELIOS bath immersion heaters can be held on the edge of the tank by screwing on the fastening

### ELECTRICAL CONNECTION

- 230 V single-phase current



### TECHNICAL DATA

TUBE LENGTH (APPROX. MM)	MIN. IMMERSION LENGTH (APPROX. MM)	POWER (APPROX. WATT)	ARTICLE NO. (BATH HEATER)	ARTICLE NO. (EXCH. JACKET TUBE)
special hard porcelain, Ø 46,5 mm				
300	250	500	05010011	05010111
450	350	750	05010021	05010121
450	350	1.000	05010031	05010121
600	450	1.000	05010041	05010141
600	450	1.500	05010051	05010141
800	600	2.000	05010061	05010161
800	600	2.500	05010071	05010161
1000	800	3.000	05010081	05010181

### ALTERNATIVE DESIGN

- other protective tube length or unheated zones
- other voltage (three-phase-current) or power
- other materials

### ATTENTION! Safety Note

This device is **not** intended for use persons (including children) with impaired physical, sensory or mental abilities or lack of experience and/or lack of knowledge, unless they are supervised by or receive from a person responsible for their safety on how to use the device.

# 5.1 Bath immersion heater

## Model bath immersion heater without thermostat

### TECHNICAL DATA

TUBE LENGTH (APPROX. MM)	MIN. IMMERSION LENGTH (APPROX. MM)	POWER (APPROX. WATT)	ARTICLE NO. (BATH HEATER)	ARTICLE NO. (EXCH. JACKET TUBE)
Engineering glass, Ø 46 mm				
300	250	500	05011011	05011111
450	350	750	05011021	05011121
450	350	1.000	05011031	05011121
600	450	1.000	05011041	05011141
600	450	1.500	05011051	05011141
800	600	2.000	05011061	05011161
800	600	2.500	05011071	05011161
1000	800	3.000	05011081	05011181
Teflon (PTFE), Ø 46 mm				
300	250	500	05013011	05013111
450	350	750	05013021	05013121
600	450	1.000	05013031	05013131
800	600	1.400	05013041	05013141
1000	800	1.900	05013051	05013151
Stainless-steel, mat. no. 1.4571 (AISI 316Ti), Ø 42,4 mm				
300	250	500	05016011	05016111
450	350	750	05016021	05016121
450	350	1.000	05016031	05016121
600	450	1.000	05016041	05016141
600	450	1.500	05016051	05016141
800	600	2.000	05016061	05016161
800	600	2.500	05016071	05016161
1000	800	3.000	05016081	05016181

### ALTERNATIVE MATERIALS for the protective tube

- Titanium, Ø 40 mm
- Steel, Ø 42 mm
- Stainless-steel, mat. no. 1.4539 (AISI 904L), Ø 42,4 mm