

# 1.2 Screw-in heating element G 1½

## Model C/Th/INC/3/G 1½ with thermostat, internally regulated

### APPLICATION

- direct water heating

### DESIGN

- 3 tubular heating elements made of special material mat.-no. 2.4858 (alloy 825)
- 35 mm unheated
- brass-nipple G 1½
- thermostat 0 to 120 °C, switching difference 3 K, switching capacity see catalogue page 12.5
- bright-galvanized steel-cap, protection type IP 30, with 2<sup>nd</sup> cable entry for control cable at three-phase current



### ELECTRICAL CONNECTION

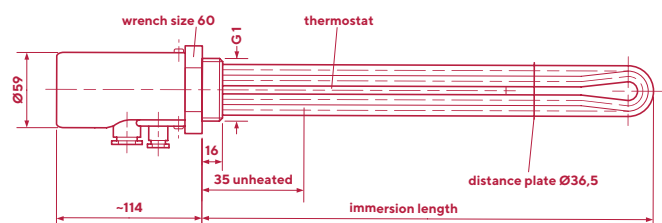
- up to 3.000 Watt at 230 V single-phase current, thermostat switches directly
- up to 9.000 Watt at 230/400 V three-phase current, contactor necessary
- 12.000 Watt only available for 3 x 400 V three-phase current, delta connection, contactor necessary

### TECHNICAL DATA

IMMERSION LENGTH (APPROX. MM)	POWER (APPROX. WATT)	SURFACE LOAD (WATT/CM <sup>2</sup> )	ARTICLE NO.
175	2.000	9,0	01024011
230	3.000	9,7	01024021
330	4.500	9,6	01024031
405	6.000	10,2	01024041
520	7.500	9,8	01024051
620	9.000	9,7	01024061
770	12.000	10,3	01024071

### ALTERNATIVE DESIGN

- other lengths or unheated areas
- other voltage or power
- thread G 2
- brass-screw-cap, protection type IP 65 height, 140 mm, cable entry axia



# 1.3 Screw-in heating element G 1½

## Model C/Th/INC/3/G 1½ with thermostat, externally regulated

### APPLICATION

- direct water heating

### DESIGN

- 3 tubular heating elements made of special material mat.-no. 2.4858 (alloy 825)
- 35 mm unheated
- brass-nipple G 1½,
- thermostat 30 to 110 °C, switching difference 5 K, switching capacity see catalogue page 12.5
- bright-galvanized steel-cap, protection type IP 30, cable entry adjustable by 360°



### ELECTRICAL CONNECTION

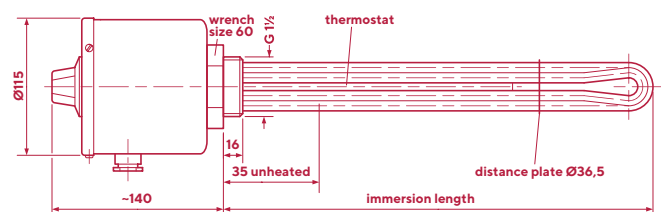
- up to 3.000 Watt at 230 V single-phase current, single-pole thermostat switches directly
- up to 9.000 Watt at 230/400 V three-phase current, three-pole thermostat switches directly
- 12.000 Watt only available for 3 x 400 V three-phase current, delta connection, contactor necessary

### TECHNICAL DATA

IMMERSION LENGTH (APPROX. MM)	POWER (APPROX. WATT)	SURFACE LOAD (WATT/CM <sup>2</sup> )	ARTICLE NO.
175	2.000	9,0	01034011
230	3.000	9,7	01034021
330	4.500	9,6	01034031
405	6.000	10,2	01034041
520	7.500	9,8	01034051
620	9.000	9,7	01034061
770	12.000	10,3	01034071

### ALTERNATIVE DESIGN

- other lengths or unheated areas
- other voltage or power
- thread G 2
- protection type IP 65
- thermostat 0 to 85 °C, switching difference 4 K, switching capacity see catalogue page 12.5
- cap, protection type IP 65, Ø 75 mm, height 150 mm, immersion length + 15 mm
- plastic case, protection type IP 65, polycarbonate 80 x 82 x 95 mm
- control light



# 1.4 Screw-in heating element G 1½

## Model C/INC/TR0/3/G 1½ with dry-run protection

### APPLICATION

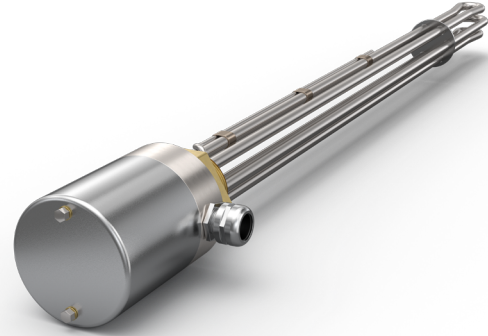
- direct water heating

### DESIGN

- 3 tubular heating elements made of special material mat.-no. 2.4858 (alloy 825)
- 35 mm unheated
- brass-nipple G 1½,
- dry-run protection, operating temperature 165 °C (-30K), 3 x 40 A, up to 400 V
- steel-cap, protection type IP 30, cable entry adjustable by 360°

### ELECTRICAL CONNECTION

- up to 3.000 Watt at 230 V single-phase current
- up to 9.000 Watt at 230/400 V three-phase current
- 12.000 Watt only available for 3 x 400 V three-phase current, delta connection, dry-run protection switches directly



### TECHNICAL DATA

IMMERSION LENGTH (APPROX. MM)	POWER (APPROX. WATT)	SURFACE LOAD (WATT/CM <sup>2</sup> )	ARTICLE NO.
175	2.000	9,0	01044011
230	3.000	9,7	01044021
330	4.500	9,6	01044031
405	6.000	10,2	01044041
520	7.500	9,8	01044051
620	9.000	9,7	01044061
770	12.000	10,3	01044071

### ALTERNATIVE DESIGN

- other lengths or unheated areas
- other voltage or power
- thread G 2
- thermostat 0 to 85 °C, switching difference 4 K, switching capacity see catalogue page 12.5
- cap, protection type IP 65, Ø 75 mm, height 150 mm, immersion length + 15 mm

