

1.6 Screw-in heating element G 1½

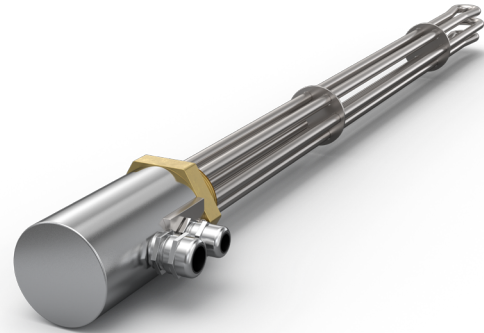
Model C/Th/i/INC/3/G 1½ with thermostat, internally regulated
Model without thermostat on request

APPLICATION

- direct heating of domestic hot water
- a) steel enamelled pressure-type storages with active anode
- b) other storage heaters, stainless-steel storages without resistant

DESIGN

- 3 tubular heating elements made of special material mat.-no. 2.4858 (alloy 825)
- isolate built-in tubular heating elements, 80 mm unheated
- brass-nipple G 1½, steel-cap, protection type IP 30
- with 2nd cable entry for control cable at three-phase current
- thermostat 0 to 120 °C, switching difference 3 K, switching capacity see catalogue page 12.5
- threaded socket length up to 35, resistance 560 ohms
- threaded socket length longer than 35, resistance 10 ohms, we ask for your information



ELECTRICAL CONNECTION

- 2.000 Watt at 230 V single-phase current, single-pole thermostat switches directly
- 3.000 Watt at 230 V single-phase current, single-pole thermostat switches directly
- from 3.000 Watt at 230/400 V three-phase current, contactor necessary

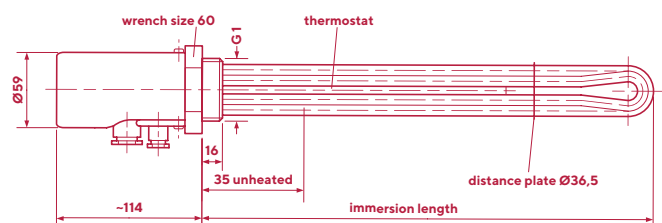
TECHNICAL DATA

IMMERSION LENGTH (APPROX. MM)	POWER (APPROX. WATT)	SURFACE LOAD (WATT/CM ²)	ARTICLE NO.
480	2.000*	4,9	01060011
450	3.000	5,2	01060021
600	4.500	5,5	01060031
600	6.000	7,4	01060041
700	6.000	6,2	01060051
700	7.500	7,7	01060061
800	9.000	8,0	01060071

*only available for 230 V single-phase current.

ALTERNATIVE DESIGN

- other lengths or unheated areas
- other voltage or power
- thread G 2
- brass-screw-cap, protection type IP 65, height 140 mm, cable entry axial



1.7 Screw-in heating element G 1½

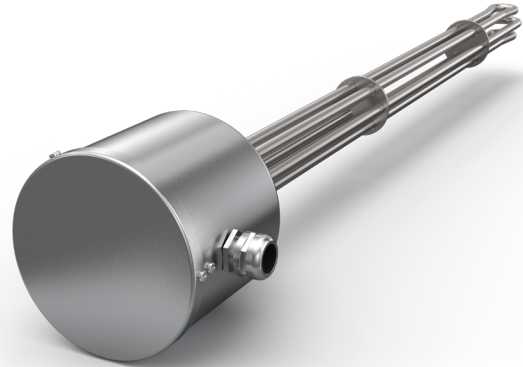
Model C/Th/STB/i/INC/3/G 1½ with double-thermostat, internally regulated

APPLICATION

- direct heating of domestic hot water
- a) steel enamelled pressure-type storages with active anode
- b) other storage heaters, stainless-steel storages without resistant

DESIGN

- 3 tubular heating elements made of special material mat.-no. 2.4858 (alloy 825)
- isolate built-in tubular heating elements, 80 mm unheated
- brass-nipple G 1½, steel-cap, protection type IP 30
- double-thermostat, switching difference, switching capacity 20 A, 400 V, three-pole
- thermostat (5) to 85 °C, switching difference 12 K
- temperature-limiter 110 °C
- threaded socket length up to 35, resistance 560 ohms
- threaded socket length longer than 35, resistance 10 ohms, we ask for your information



ELECTRICAL CONNECTION

- 2.000 Watt at 230 V single-phase current, single-pole thermostat switches directly
- 3.000 Watt at 230 V single-phase current, single-pole thermostat switches directly
- from 3.000 Watt at 230/400 V three-phase current, contactor necessary

TECHNICAL DATA

IMMERSION LENGTH (APPROX. MM)	POWER (APPROX. WATT)	SURFACE LOAD (WATT/CM ²)	ARTICLE NO.
480	2.000*	4,9	01070011
450	3.000	5,2	01070021
600	4.500	5,5	01070031
600	6.000	7,4	01070041
700	6.000	6,2	01070051
700	7.500	7,7	01070061
800	9.000	8,0	01070071

*only available for 230 V single-phase current.

ALTERNATIVE DESIGN

- other lengths or unheated areas
- other voltage or power

