

3.1 Cartridge heating element G 2

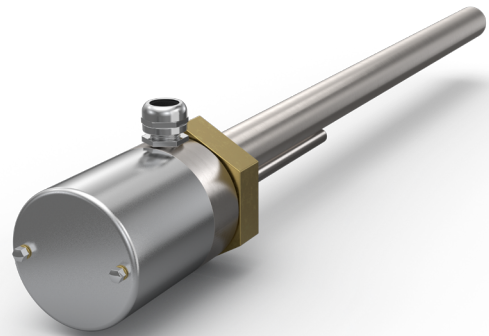
Model O/Th/AVI G 2 with thermostat, internally regulated

APPLICATION

- heating up thin oils, hydraulic oil or similar oil
- specific surface load 1.6 W/cm²

DESIGN

- exchangeable heating element, 230 V, with earth protection
- brass-nipple G 2, steel-jacket Ø 29 mm
- thermostat 0 to 120 °C, switching difference 3 K, switching capacity see catalogue page 12.5
- steel-cap, protection type IP 65, with radial cable entry, adjustable by 360°
- **horizontal** installation



ELECTRICAL CONNECTION

- at 230 V single-phase current or 400 V (2~) two-phase current, thermostat switches directly

TECHNICAL DATA

IMMERSION LENGTH (APPROX. MM)	POWER (APPROX. WATT)	ARTICLE NO. 230 V~	ARTICLE NO. 400 V~
300	450	03011011	03012111
400	600	03011021	03012121
500	750	03011031	03012131
600	900	03011041	03012141
700	1.050	03011051	03012151
800	1.200	03011061	03012161
900	1.350	03011071	03012171
1000	1.500	03011081	03012181

ALTERNATIVE DESIGN

- other lengths or unheated areas
- other voltage or power
- vertical installation

