

# 3.5 Cartridge heating element G 1½

## Model O/AVI G 1½ without thermostat

### APPLICATION

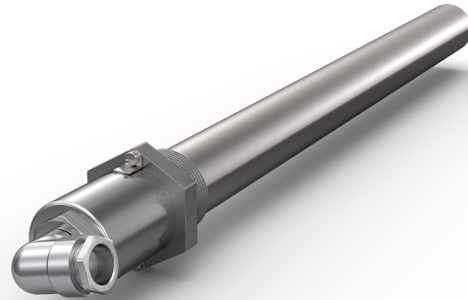
- heating up thin oils, hydraulic oil, heat transfer oil
- heating up fluids with similar viscosity to water
- specific surface load 1.5 W/cm<sup>2</sup> or 2.5 W/cm<sup>2</sup>

### DESIGN

- exchangeable heating element, 230 V, with earth protection
- brass-nipple G 1½, steel-jacket Ø 42 mm
- brass-screw-cap, protection type IP 65
- horizontal installation

### ELECTRICAL CONNECTION

- up to 3.500 Watt at 230 V single-phase current
- over 3.500 Watt at 230/400 V three-phase current



TECHNICAL DATA		ARTICLE NO.		ARTICLE NO.	
IMMERSION LENGTH (APPROX. MM)	POWER (APPROX. WATT)	SURFACE LOAD 1,5 W/CM <sup>2</sup>	POWER (APPROX. WATT)	SURFACE LOAD 2,5 W/CM <sup>2</sup>	ARTICLE NO.
300	600	03052021	1.000	03053021	03053021
400	800	03052031	1.300	03053031	03053031
600	1.200	03052051	2.000	03053051	03053051
800	1.600	03052071	2.650	03053071	03053071
1000	2.000	03052091	3.300	03053091	03053091
1200	2.400	03052111	4.000*	03053111	03053111
1400	2.800	03052121	4.600*	03053121	03053121
1600	3.200	03052131	5.300*	03053131	03053131
2000	4.000*	03052151	6.600*	03053151	03053151

\*only for 3-phase current available.

### ALTERNATIVE DESIGN

- other lengths or unheated areas
- other voltage or power
- vertical installation
- brass-screw-cap, protection type IP 65, cable entry axial, height 107 mm
- brass-screw-cap, protection type IP 65, cable entry radial
- three-phase connection
- other materials, stainless steel nipple, mat.-no. 1.4571 (AISI 316TI)
- other materials, stainless steel jacket, mat.-no. 1.4571 (AISI 316TI)

