

# 5.2 Bath immersion heater

## Model bath immersion heater with thermostat

### APPLICATION

- direct heating of water, caustic solutions, acids, mordant and other fluids that allow a specific surface load of 2.5 W/cm<sup>2</sup>

### DESIGN

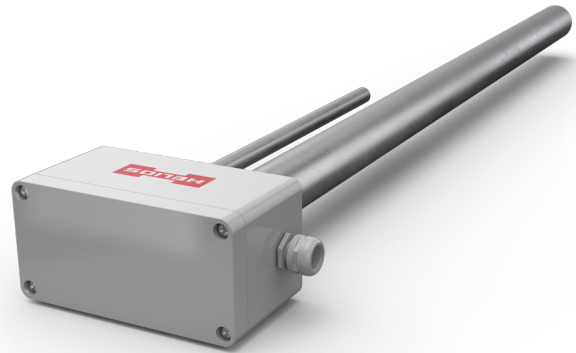
- exchangeable heating element made of stainless-steel
- exchangeable protective tube, different materials are available
- thermostat 0 to 120 °C, switching difference 3 K, switching capacity see catalogue page 12.5
- protective tube of the thermostat made of polypropylene
- macrolon terminal box, protective type IP 65
- with 2 m long plastic-coated power cable (up to 100 °C), without plug

### INSTALLATION

- Helios bath immersion heaters must be installed vertically in the fluid to be heated
- there are markings for the minimum and maximum liquid level on the protective tube
- the liquid level may fluctuate between the marks, but not fall below or exceed them
- Helios bath immersion heaters can be held on the edge of the tank by screwing on the fastening

### ELECTRICAL CONNECTION

- 230 V single-phase current, single-pole thermostat switches directly



### TECHNICAL DATA

TUBE LENGTH (APPROX. MM)	MIN. IMMERSION LENGTH (APPROX. MM)	POWER (APPROX. WATT)	ARTICLE NO. (BATH HEATER)	ARTICLE NO. (EXCH. JACKET TUBE)
			special hard porcelain, Ø 46,5 mm	
300	250	500	05020011	05010211
450	350	750	05020021	05010221
450	350	1.000	05020031	05010231
600	450	1.000	05020041	05010241
600	450	1.500	05020051	05010251
800	600	2.000	05020071	05010261
800	600	2.500	05020071	05010271
1000	800	3.000	05020081	05010281

### ALTERNATIVE DESIGN

- other protective tube length or unheated zones
- other voltage (three-phase-current) or power
- other materials

### ATTENTION! Safety Note

This device is **not** intended for use persons (including children) with impaired physical, sensory or mental abilities or lack of experience and/or lack of knowledge, unless they are supervised by or receive from a person responsible for their safety on how to use the device.

# 5.2 Bath immersion heater

## Model bath immersion heater with thermostat

### TECHNICAL DATA

TUBE LENGTH (APPROX. MM)	MIN. IMMERSION LENGTH (APPROX. MM)	POWER (APPROX. WATT)	ARTICLE NO. (BATH HEATER)	ARTICLE NO. (EXCH. JACKET TUBE)
Engineering glass, Ø 46 mm				
300	250	500	05021011	05010211
450	350	750	05021021	05010221
450	350	1.000	05021031	05010231
600	450	1.000	05021041	05010241
600	450	1.500	05021051	05010251
800	600	2.000	05021061	05010261
800	600	2.500	05021071	05010271
100	800	3.000	05021081	05010281
Teflon (PTFE), Ø 46 mm				
300	250	500	05023011	05010211
450	350	750	05023021	05010221
600	450	1.000	05023031	05010241
800	600	1.400	05023041	05013241
1000	800	1.900	05023051	05013251
Stainless-steel, mat. no. 1.4571 (AISI 316Ti), Ø 42,4 mm				
300	250	500	05026011	05010211
450	350	750	05026021	05010221
450	350	1.000	05026031	05010231
600	450	1.000	05026041	05010241
600	450	1.500	05026051	05010251
800	600	2.000	05026061	05010261
800	600	2.500	05026071	05010271
1000	800	3.000	05026081	05010281

### ALTERNATIVE MATERIALS for the protective tube

- Titanium, Ø 40 mm
- Steel, Ø 42 mm
- Stainless-steel, mat. no. 1.4539 (AISI 904L), Ø 42,4 mm