

# 9.11 Finned-tube heating element Ø 28

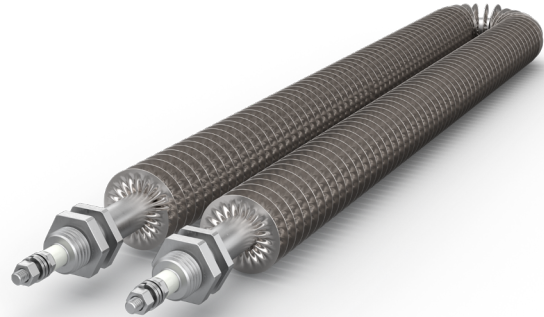
## Model design A (bend with fins) and design B (bend without fins)

### APPLICATION

- heating up air or gases in air heaters, shrink-film ovens, convection- and defrosting heaters

### DESIGN

- tubular heating elements made of stainless steel mat.-no. 1.4541 (AISI 321)
- jacket with fins Ø 28 mm
- nipple made of stainless-steel mat.-no. 1.4301 (AISI 304)
- max. surface temperature 550 °C
- 230 V

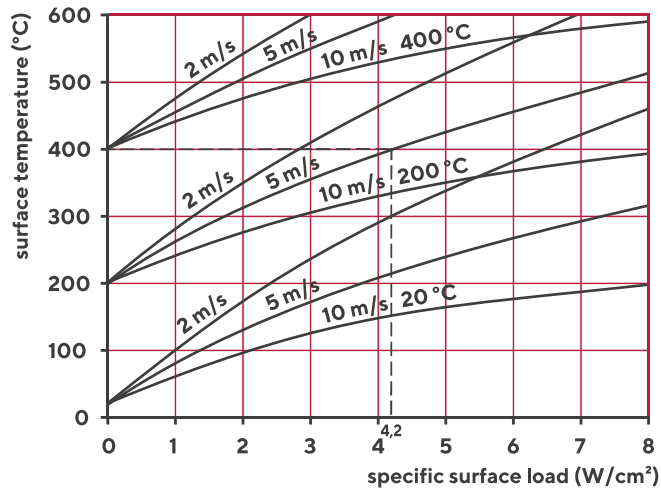


### TECHNICAL ADVANTAGES

- High degree of operational reliability, dielectric strength, protection against contact and humidity, resistant against external influences and high temperatures
- good heat transmission and heat conductivity
- easy malleable, stable and vibration resistant
- long life expectancy

### DESIGN

Determination of the surface temperature of the tube jacket depending on the surface load and air temperature at different air speeds



### ALTERNATIVE DESIGN

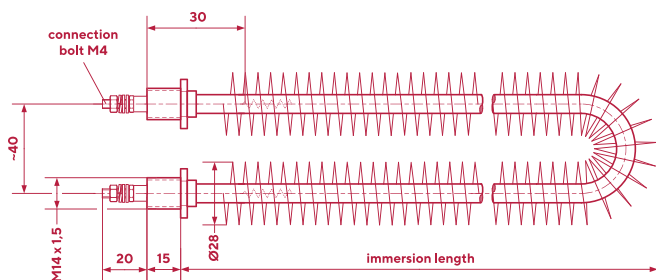
- other dimensions
- other voltage or power
- other materials of the tubular heating element

# 9.12 Finned-tube heating element Ø 28

## Model design A (bend with fins) and design B (bend without fins)

TECHNICAL DATA			ARTICLE NO.	ARTICLE NO.
IMMERSION LENGTH (APPROX. MM)	POWER (APPROX. WATT)	SURFACE LOAD (WATT/CM <sup>2</sup> )	DESIGN A (BEND WITH FINNS)	DESIGN B (BEND WITHOUT FINNS)
390	700	3,8	09123051	
390	1.000	5,4	09123061	
460	335	1,5	09123071	450 09124071
460	500	2,3	09123081	450 09124081
460	1.000	4,5	09123091	450 09124091
460	1.500	6,8	09123101	450 09124101
610	2.000	6,7	09123111	600 09124111
685	500	1,5	09123121	675 09124121
685	750	2,2	09123131	675 09124131
685	1.000	2,9	09123141	675 09124141
685	1.500	4,4	09123151	675 09124151
685	2.000	5,9	09123161	675 09124161
740	1.500	4,0	09123171	730 09124171
885	660	1,5	09123191	875 09124191
885	1.000	2,3	09123201	875 09124201
885	2.000	4,5	09123211	875 09124211
885	3.000	6,7	09123221	875 09124221
990	1.000	2,0	09123231	980 09124231
990	2.000	4,0	09123241	980 09124241
990	3.000	6,0	09123251	980 09124251
1105	833	1,5	09123261	1095 09124261
1105	2.500	4,5	09123271	1095 09124271

design A



design B

