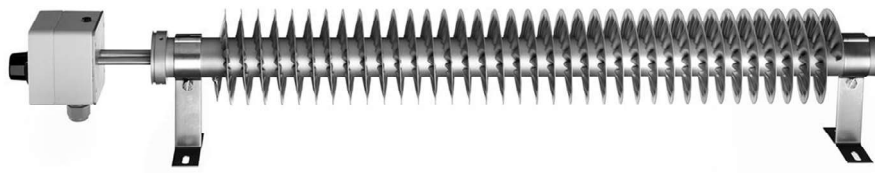


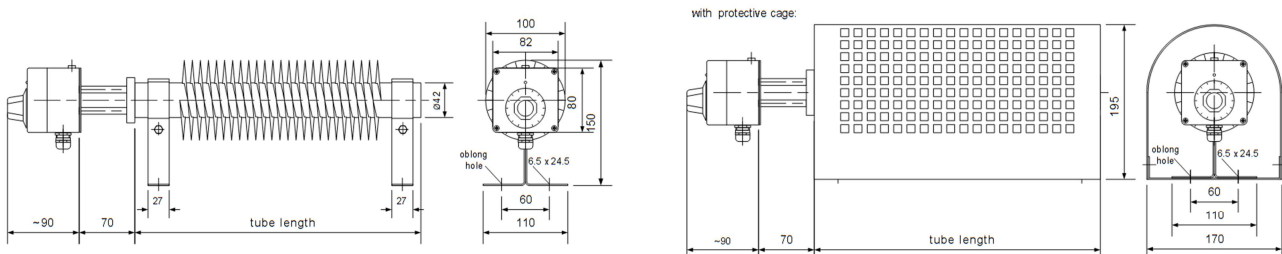


6.3 Finned-tube heating element

with room temperature controller



Application	<p>Finned-tube heating elements for heating and anti-frost protection of: assembly pits, crane driver cabs, payment booths, toilets, greenhouses, workshops, workplaces, cellars, water supply installations, switchgears and more. With room temperature controller adjustable from +5°C to +35°C</p>
Design	<p>Stainless-steel finned-tube with 2 footrests 230 V tubular heating elements Ø 8,4 mm made of stainless-steel bright-galvanized steel hood, protection system IP65 with room temperature controller adjustable from +5°C to +35°C, with indicator light Finned-tube temperature on surface approx. 260°C, with protective cage approx. 150°C on surface of the protective cage</p>
Installation	<p>Horizontally on floors or walls. Do not place any objects on the finned-tube heating elements. Be careful with cladding (heat build-up). Protection cage as touch-protection available</p>



tube length [mm]	Power [Watt]	Voltage	Design a) without protective cage Article-no.	Design b) with protective cage Article-no.
400	600	230 V~	0603 1411	0603 1511
500	1000	230 V~	0601 1421	0601 1521
750	1500	230 V~	0603 1431	0603 1531
1000	2000	230 V~	0603 1441	0603 1541
1500	3000	230 V~	0603 1451	0603 1551