

1.13 Screw-in heating element G1½



Model C/RR/3/G 1½
without thermostat

Article-no. 01130...

Model C/Th/RR/3/G1½
with thermostat,
internally regulated

Article-no. 01131...

Model C/Th/a/RR/3/G1½
with thermostat,
externally regulated

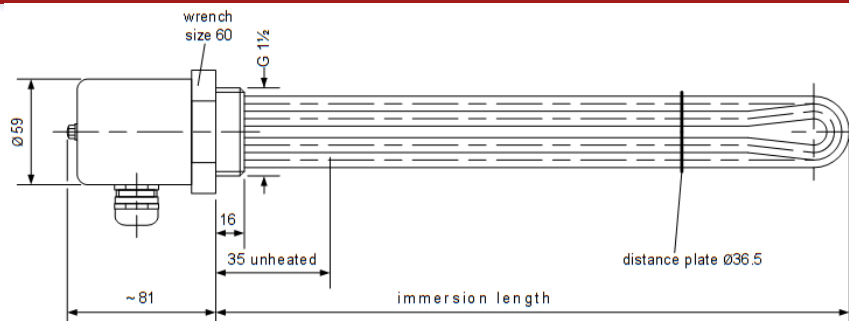
Article-no. 01132...

Application

Heating up thin oils, aqueous solutions and fluids that do not attack stainless steel mat.-no. 1.4541 (AISI 321).
Heating up air to 120°C. For air temperatures over 120°C, please ask for information.

Design

3 tubular heating elements made of stainless-steel, mat.-no. 1.4541 (AISI 321), brass nipple G 1½, 35 mm unheated
Model C/RR/3/G1½, Article-no. 01130..., without thermostat (design is shown on this page)
Model C/Th/RR/3/G1½, Article-no. 01131..., with thermostat, internally regulated, thermostat 0 to 120°C, differential gap 3 K, single-pole (see design and photo on page 1.2)
Model C/Th/a/RR/3/G1½, Article-no. 01132..., with thermostat, externally regulated, thermostat 30 to 110°C, three-pole, switches directly (see design and photo on page 1.11)



Special design

Other lengths, unheated areas, powers, voltages, thread G 2 and materials are available.

Immersion length [mm] approx.	Power [Watt] approx.	Model C/RR/3/G1½ Article-no.	Model C/Th/RR/3/G1½ Article-no.	Model C/Th/a/RR/3/G1½ Article-no.
-------------------------------	----------------------	------------------------------	---------------------------------	-----------------------------------

Surface load 2 W/cm²

455	1350	0113 0011	0113 1011	0113 2011
680	2000	0113 0021	0113 1021	0113 2021
880	2700	0113 0031	0113 1031	0113 2031
1100	3500	0113 0041	0113 1041	0113 2041

Electrical connection at 230 V single-phase current or 230/400 V three-phase current

Surface load 6 W/cm²

455	4000	0113 0111	0113 1111	0113 2111
680	6000	0113 0121	0113 1121	0113 2121
880	8000	0113 0131	0113 1131	0113 2131
1100	10500	0113 0141	0113 1141	0113 2141

Electrical connection at 400 V (2~)phase-phase current (up to 6000 W)
or 230/400 V three-phase current



1.14 Screw-in heating element G1½



Model C/Th/a/STB/RR/3/G1½

with thermostat and limiter,
externally regulated
Article-no. 01140...

Model C/Th/a/TRORR/3/G1½

with thermostat and run-dry protection,
externally regulated
Article-no. 01141...

Application

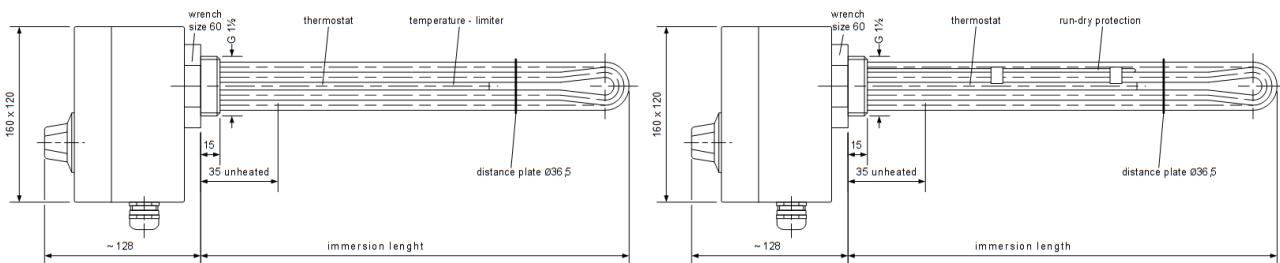
Heating up chlorine-free water, weak acids and caustic solutions that do not attack stainless steel mat.-no. 1.4571 (AISI 316Ti).

Design

3 tubular heating elements made of stainless-steel, mat.-no. 1.4571 (AISI 316Ti),
nipple made of stainless-steel, G 1½, 35 mm unheated
plastic case with IP 65 protection

Model C/Th/a/STB/RR/3/G1½, Article-no. 01140..., with thermostat, externally regulated,
thermostat 30 to 110°C, three-pole, switches directly **and** with temperature-limiter 115°C

Model C/Th/a/TRO/RR/3/G1½, Article-no. 01141..., with thermostat, externally regulated,
thermostat 30 to 110°C, three-pole, switches directly **and** with run-dry protection 165°C



Special design

Other lengths, unheated areas, powers, voltages and materials are available.

Immersion length [mm] approx.	Power [Watt] approx.	Model C/Th/a/STB/RR/G1½ Article-no.	Model C/Th/a/TRO/RR/3/G1½ Article-no.
-------------------------------	----------------------	-------------------------------------	---------------------------------------

Surface load 2 W/cm²

455	1350	0114 0011	0114 1011
680	2000	0114 0021	0114 1021
880	2700	0114 0031	0114 1031
1100	3500	0114 0041	0114 1041

Electrical connection at 230 V single-phase current or 230/400 V three-phase current

Surface load 6 W/cm²

455	4000	0114 0111	0114 1111
680	6000	0114 0121	0114 1121
880	8000	0114 0131	0114 1131
1100	10500	0114 0141	0114 1141

Electrical connection at 400 V (2~) phase-phase current (up to 6000 W)
or 230/400 V three-phase current